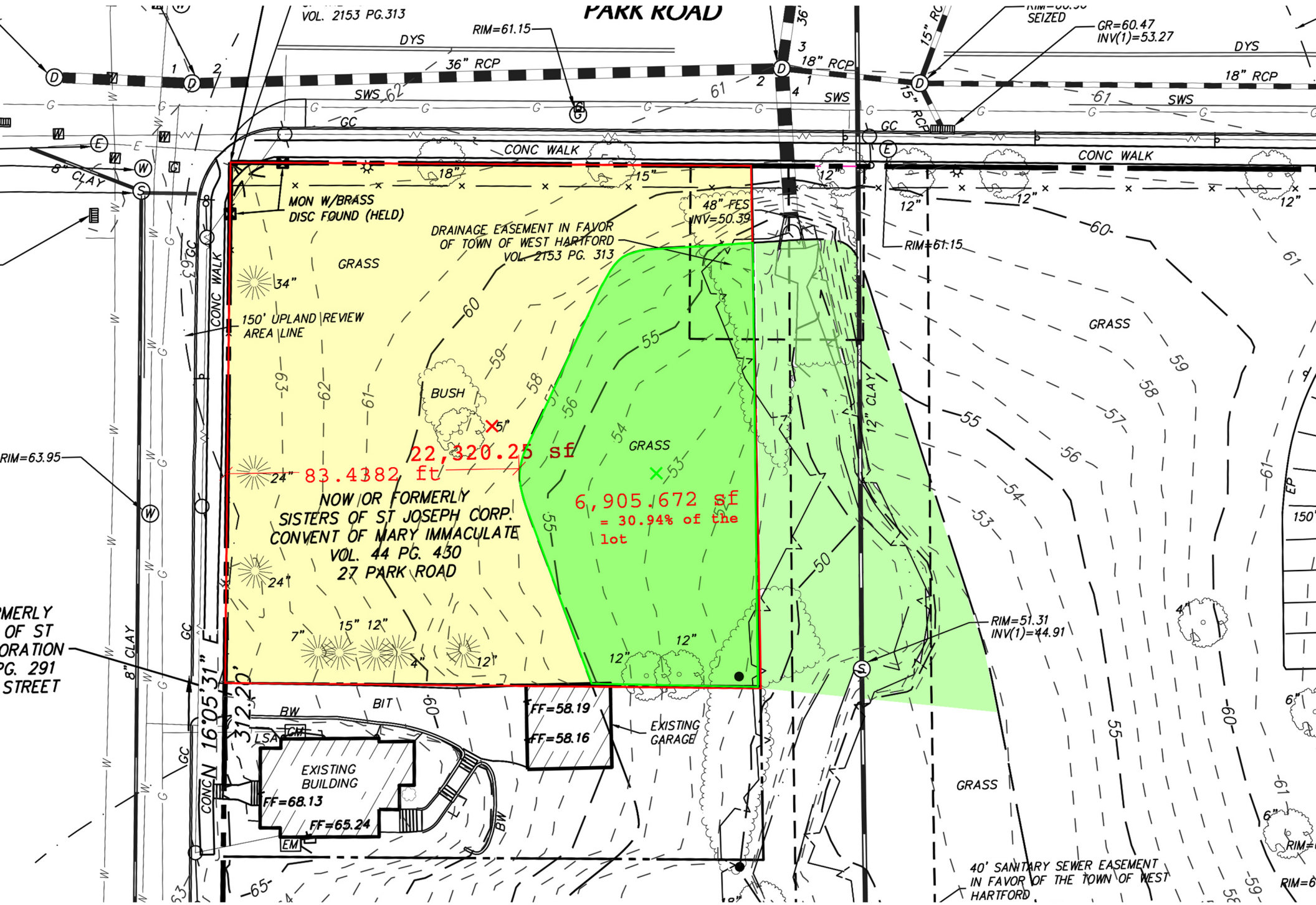


PARK ROAD



VOL. 2153 PG.313

RIM=61.15

GR=60.47
INV(1)=53.27

MON W/BRASS
DISC FOUND (HELD)

DRAINAGE EASEMENT IN FAVOR
OF TOWN OF WEST HARTFORD
VOL. 2153 PG. 313

48" FES
INV=50.39

150' UPLAND REVIEW
AREA LINE

22,320.25 sf
83.4382 ft

6,905.672 sf
= 30.94% of the
lot

NOW OR FORMERLY
SISTERS OF ST JOSEPH CORP.
CONVENT OF MARY IMMACULATE
VOL. 44 PG. 450
27 PARK ROAD

EXISTING BUILDING
FF=68.13
FF=65.24

EXISTING GARAGE

RIM=51.31
INV(1)=44.91

40' SANITARY SEWER EASEMENT
IN FAVOR OF THE TOWN OF WEST
HARTFORD

FORMERLY
OF ST
ORATION
PG. 291
STREET